

## Product Data Sheet

**J2L2PX305.14P-E2-C**

XXXX Pol Panel Antenna 2×617-806/2×1710-2690MHz 65°/65° 14 /19 dBi 2-14°/2-12° Replaceable RET

**Electrical Specifications**

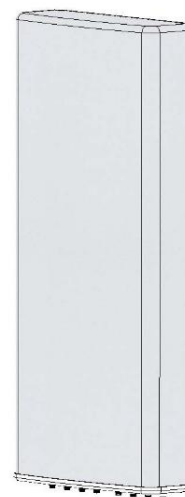
Frequency Range (MHz):	617-806(R1,R2)		1710-2690(Y1,Y2)		
	617-698	698-806	1710-2170	2300-2490	2490-2690
Gain (dBi):	13.3±0.5	14.0±0.5	18.0±0.5	18.9±0.5	19.2±0.5
Return Loss (dB):	>14 (VSWR<1.5)				
Polarization (°):	±45				
Horizontal 3dB Beamwidth (°):	66	61	68	60	62
Vertical 3dB Beamwidth (°):	16	14.5	6.0	5.0	4.0
Electrical Downtilt (°):	2-14		2-12		
RET Type:	Cascade SRET, AISG 2.0 ,Upgradeable				
1 <sup>st</sup> Upper Sidelobe Suppression (dB):	16	16	16	16	16
Upper Sidelobe Suppression,+20°(dB):	16	16	16	16	16
Front to Back Ratio 180±30 <sup>0</sup> (dB):	25	25	25	25	25
Cross Polar Ratio 0° (dB):	15	15	15	15	15
Cross Polar Ratio 60° (dB)	10	10	10	10	10
Intraband Isolation (dB):	>25		>25		
Interband Isolation (dB):	>25				
Max. Power Per Port (W):	250		250		
Intermodulation IM3 (dBc):	<-150 (2×43 dBm)				
Impedance (ohm):	50				
Lightning Protection:	DC Grounded				
Connector Type:	8×4.3-10 Female				

**Mechanical Data**

Antenna Dimensions (mm):	1800×600×210
Packing Dimensions (mm):	2000×673×300
Antenna Net Weight/Bracket (kg):	47/5.9
Antenna Gross Weight (kg):	61
Radome Material:	Fiberglass
Pipe OD (mm):	70-114
Mounting Kits (Included):	BA.K.04.00002,Adjustable Downtilt 0-8°

**Environmental Ratings**

Humidity:	95%RH@+30°C
Temperature (°C):	-40~+70
Wind Load @150 km/h (N):	Frontal/Lateral/Rearside:1479/518/1937
Max. Wind velocity(km/h):	200



Product Data Sheet

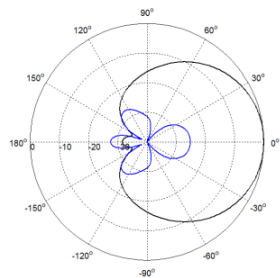
# J2L2PX305.14P-E2-C



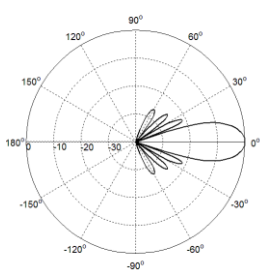
## Internal RET Specifications

RET type:	Replaceable RET
RET protocol:	AISG2.0 /3GPP
Input voltage range(V):	10-30 DC
Power consumption(W):	< 5 (motor activated , single RET) < 1 (stand by, single RET), < 1.5 (stand by, 12V)
Adjustment time (full range): (s):	< 120 (typically, depending on antenna type)
RET connector:	1 pair of AISG 5 pin male & female
Pin assignment according AISG:	5-pin circular connector conforming to IEC 60130-9 - Ed. 3.0
Lightning protection (kA):	5 (8/20 μs Differential mode), 8 (8/20 μs Common mode)

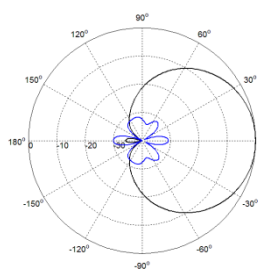
## Typical Patterns



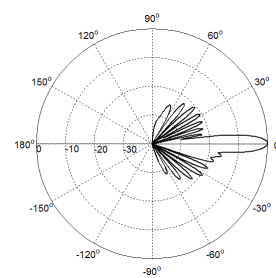
Azimuth(Low band)



Elevation(Low band)

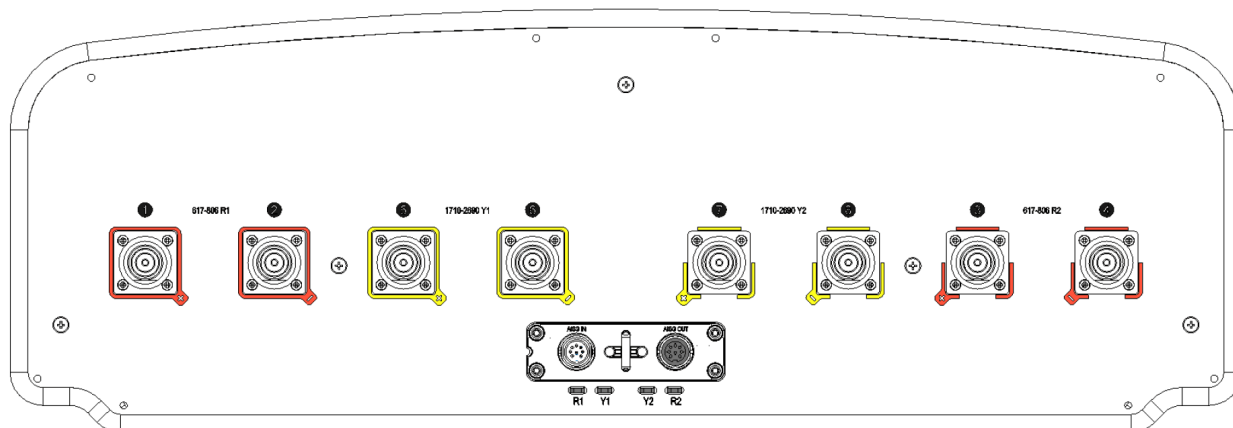


Azimuth(High band)



Elevation(High band)

## Bottom View



## Correlation Table

Frequency range	Array	Connector
617-806 MHz	R1	1-2
617-806 MHz	R2	3-4
1710-2690 MHz	Y1	5-6
1710-2690 MHz	Y2	7-8

